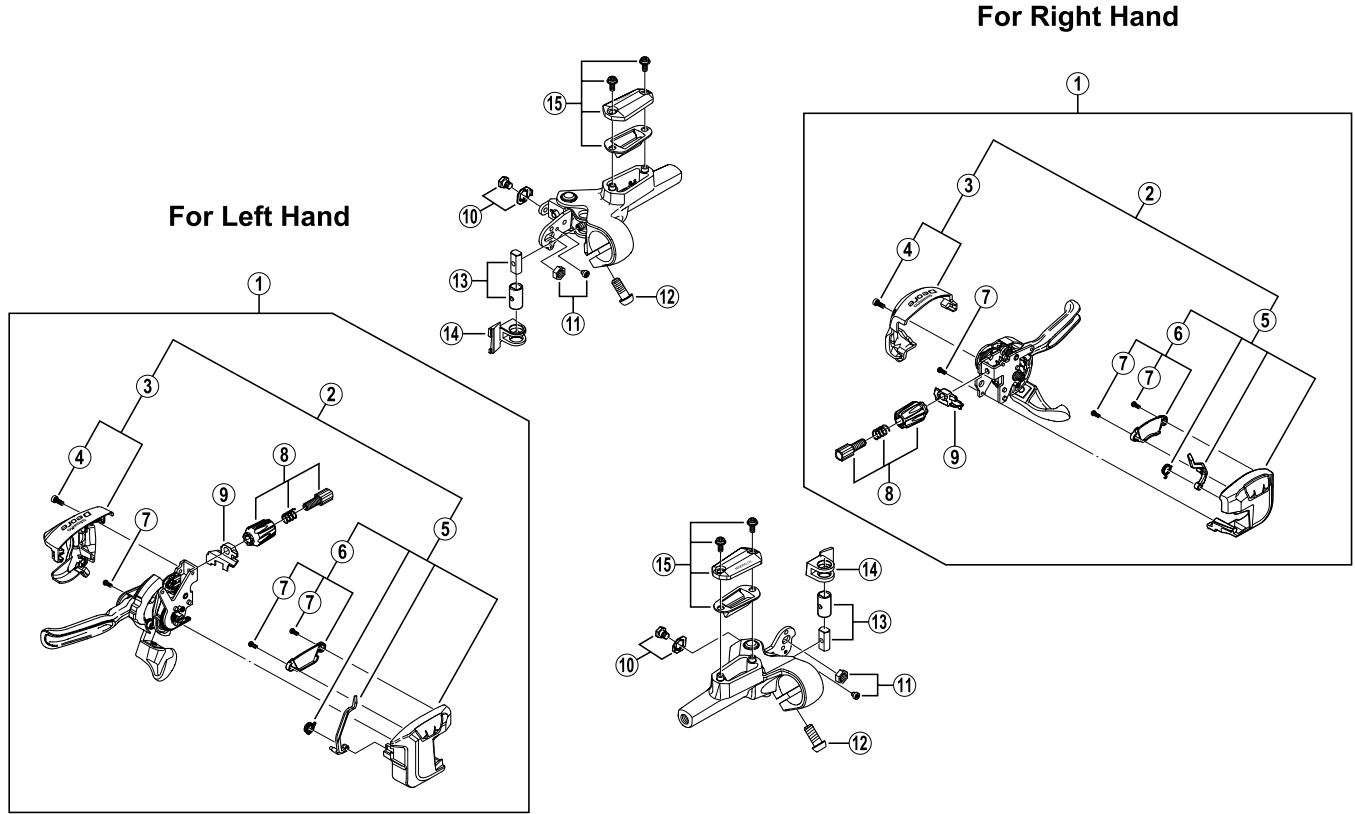


DEORE Dual Control Lever

ST-M535 For Disc Brake



ITEM NO.	SHIMANO CODE NO.	DESCRIPTION
1	Y-6KC98010	R.H. Main Lever Assembly
	Y-6KC98020	L.H. Main Lever Assembly
2	Y-6KC98030	R.H. Cover Unit
	Y-6KC98040	L.H. Cover Unit
3	Y-6KC98050	R.H. Top Cover & Fixing Screws
	Y-6KC98060	L.H. Top Cover & Fixing Screws
4	Y-6JJ 14011	Fixing Screw (M3 x 7)
5	Y-6KB98070	R.H. Bottom Cover Unit
	Y-6KB98080	L.H. Bottom Cover Unit
6	Y-6JX 98170	R.H. Indicator Back Cover & Fixing Screws
	Y-6JX 98180	L.H. Indicator Back Cover & Fixing Screws
7	Y-6A8 43010	Cover Fixing Screw
8	Y-6JJ 98180	Shifting Cable Adjusting Bolt Unit
9	Y-6KB09000	R.H. Cable Adjusting Block
	Y-6KB59000	L.H. Cable Adjusting Block
10	Y-6KB98110	Upper Plate Fixing Bolt & Stopper
11	Y-6KB98120	Unit Lock Nut (M6) & Fixing Screw (M3 x 2.5)
12	Y-8SB 10000	Clamp Bolt (M6 x 14.8)
13	Y-6JY 98050	Reach Adjusting Boss & Sleeve
14	Y-6JY 10000	R.H. Base Block
	Y-6JY 56000	L.H. Base Block
15	Y-6JY 98060	R.H. Lid Unit
	Y-6JY 98070	L.H. Lid Unit

0505-2473