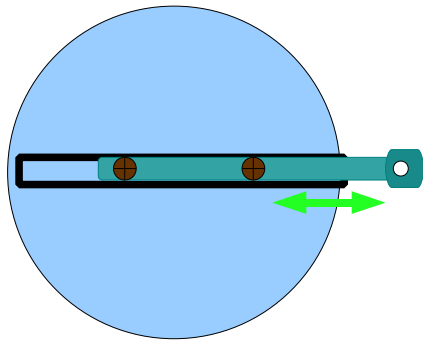
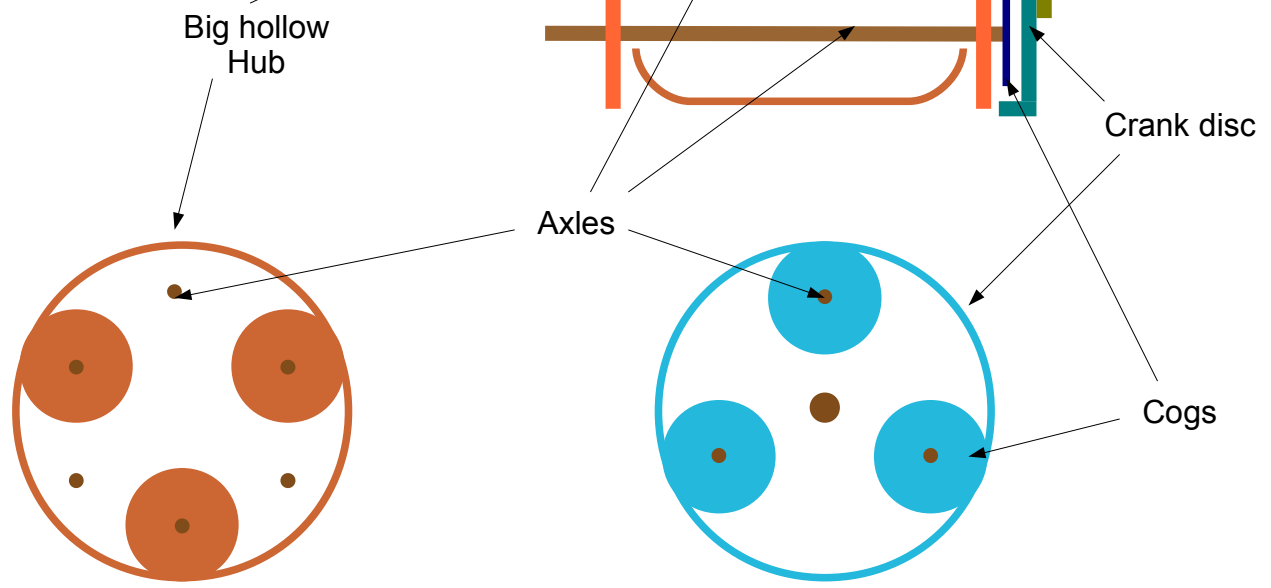
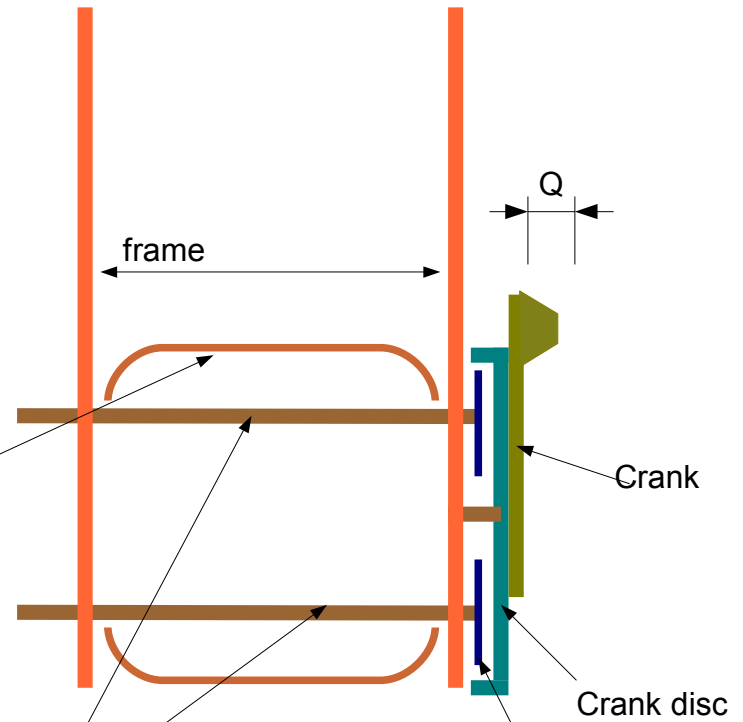


Uni gear: brainstorming (by Wobbling Bear). Half-baked ideas

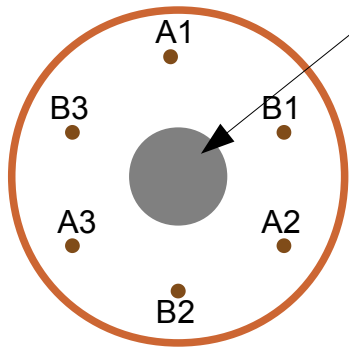


Disc supporting cranks (adjustable length)

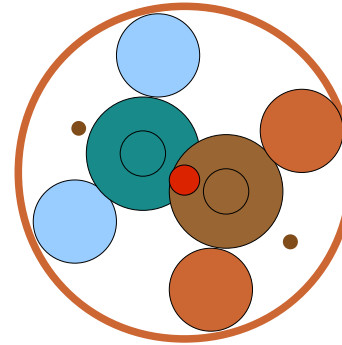


Now the question: how are the axles of the « blue » cogs going to transmit movement to the axles of the « brown » cogs that move the hub ?

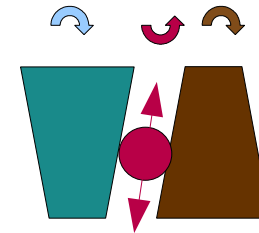
Mechanical gears



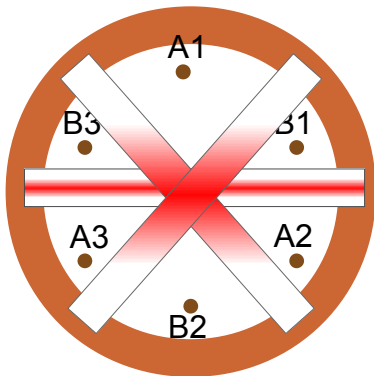
« out of the box » gears :
 - Sturmey Archer S3X
 - Bidi NuVinci (when available!)
 Input from axles A
 Output to axles B
 (may be limited to 2 axles ?)
 command comes directly
 through the frame (the gear box
 is fixed to it)



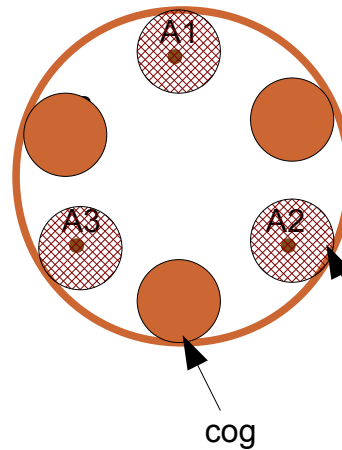
Our own
 cones and roller gear??



Electrical K.e.r.s (with batteries in the hub?)



*(the schema has no
 special meaning!)*



If needed the outer « skin »
 of the hub that support
 flanges could be also
 supported by rollers that
 turn freely around the A axles

If possible, there could also
 be only two « rolling axles »
 (one from cranks movement
 one for hub movement)

